

# HOW DO YOU DRAW?



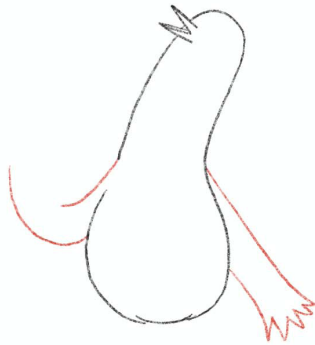
1. Draw Seagull's beak



2. Starting from the top of her beak, draw a loose b shape and then a line under the beak



3. At the bottom draw a small line and then curve a line up on the left, but leave a small gap



4. Next add Seagull's left wing, and make a start on the other



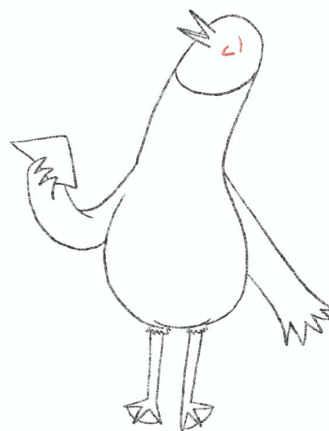
5. Add some squiggly lines at the end of her right wing, and at the bottom of her body



6. Draw her legs



7. Now join up her toes to give Seagull webbed feet. Add her sheet music and her head markings



8. Finish off with adding her eyes. You could make them open or closed!

